



GMT MONTHLY MEMBERSHIP PROGRESS REPORT

Results as of: 5/31/2020

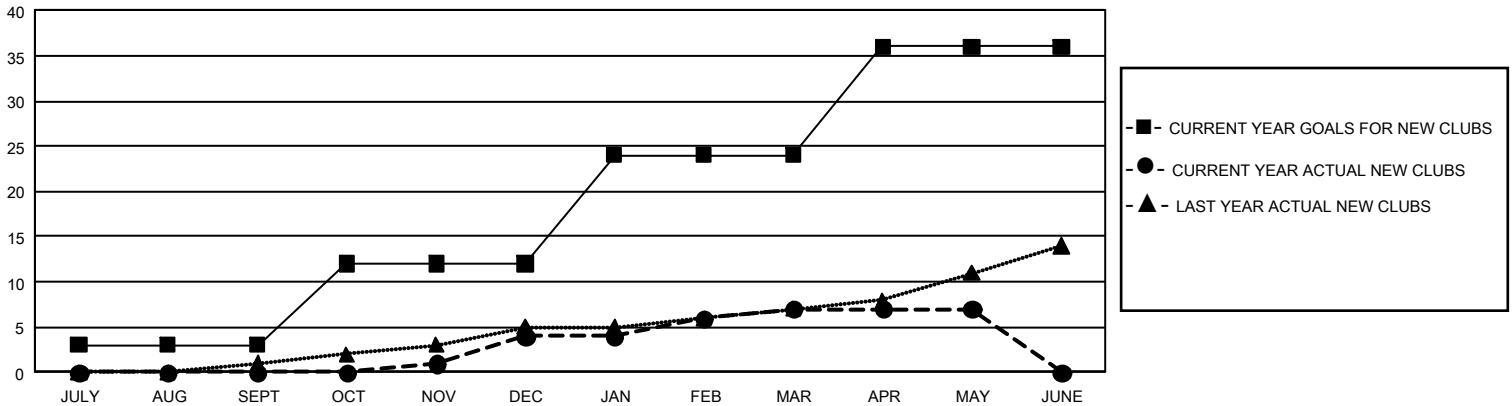
GMT Constitutional Area 4, Group D

GMT: OPEN

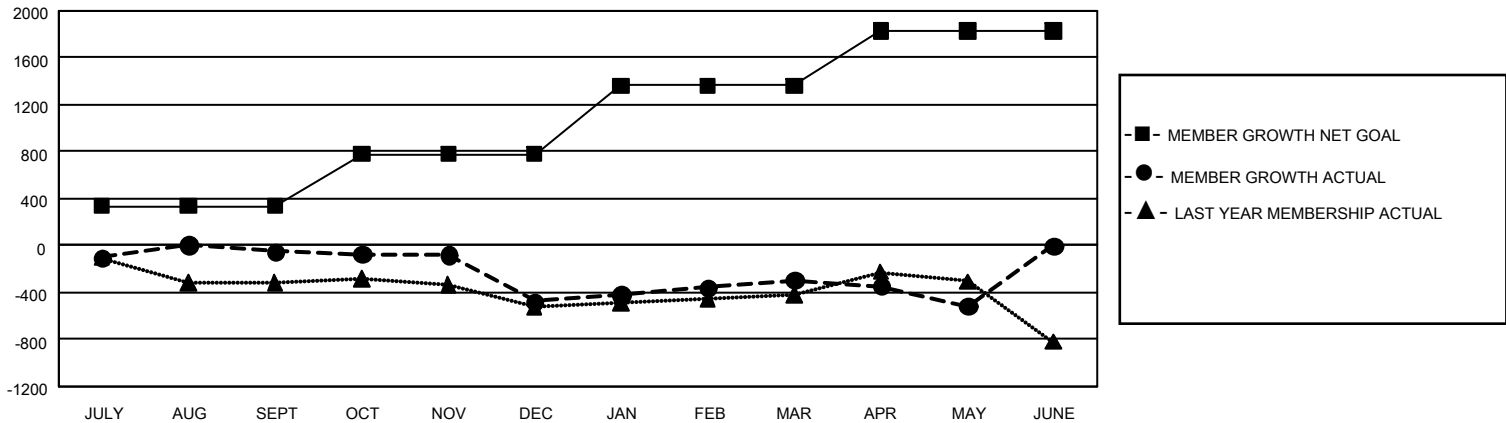
REPORT DOES NOT INCLUDE CLUBS IN UNDISTRICTED AREAS.

Clubs				Members			
RESULTS FOR 2019-2020				RESULTS FOR 2019-2020			
QUARTER	NEW CLUB GOAL	NEW CLUBS	DROPPED CLUBS	QUARTER	MEMBER GROWTH NET GOAL	MEMBER GROWTH ACTUAL	DROPPED MEMBERS ACTUAL (including transfers)
JULY/AUG/SEPT	9	0	6	JULY/AUG/SEPT	1,002	576	572
OCT/NOV/DEC	27	4	9	OCT/NOV/DEC	1,341	586	939
JAN/FEB/MAR	36	3	11	JAN/FEB/MAR	1,743	761	473
APR/MAY/JUNE	36	0	2	APR/MAY/JUNE	1,404	258	433

GOALS AND ACTUAL NEW CLUBS CUMULATIVE



GOALS AND ACTUAL MEMBERS CUMULATIVE



DROPPED CLUBS: 28	759 CLUBS OF 1,492 ADDED 1 OR MORE NEW MEMBERS	<u>GENDER DISTRIBUTION</u>	
<u>DROPPED MEMBERS</u>		MALE	21,703 (70.10%)
DECEASED	261	FEMALE	9,257 (29.90%)
CLUB CANCELLED	116	TOTAL FAMILY UNIT MEMBERS 2,842	
OTHER	2,041	FAMILY MEMBERS PAYING HALF DUES 1,452	
TOTAL	2,418		

[CLICK HERE FOR CUMULATIVE MEMBERSHIP DATA](#)